



THE BALANCE OF PAYMENTS

REMITTANCE UPDATE December 2010

External Sector Statistics Unit
Economic Information & Publications Department
RESEARCH AND ECONOMIC PROGRAMMING DIVISION
BANK OF JAMAICA
P.O. BOX 621
Kingston, Jamaica

TABLE OF CONTENTS

	Pages
Overview.....	2
Current Remittances.....	7
Historical Remittances.....	11
Selected Indicators.....	14
Remittances: Selected Countries.....	15
Remittances by Source Country.....	16
Charts	
1. Monthly Remittance Growth rates.....	17
2. Percentage Contribution by Source Country.....	18

Overview

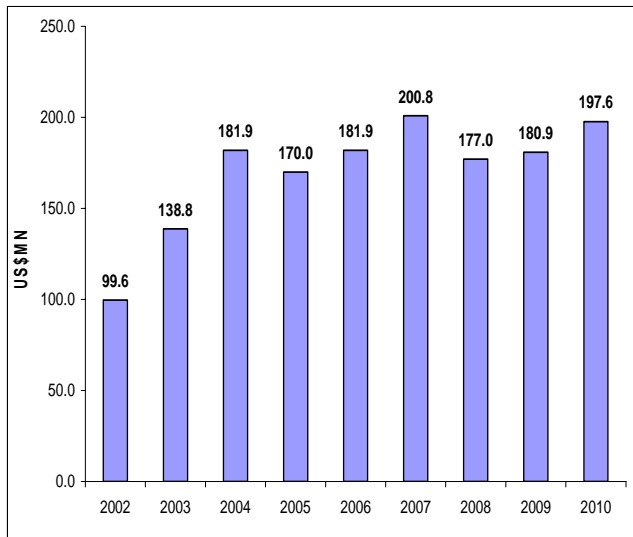
Table 1

JAMAICA'S REMITTANCES (US\$MN)				
	Dec	Dec		
	2009	2010*	Change	% Change**
Total Remittance Inflows	180.9	197.6	16.7	9.2
Remittance Companies [^]	155.4	162.3	6.9	4.4
Other Remittances	25.5	35.3	9.8	38.4
Total Remittance Outflows	24.2	22.9	-1.3	-5.5
Net Remittances	156.7	174.7	18.0	11.5

* Provisional
** Growth relative to the corresponding period of the previous year
[^] Flows through Remittance Companies

Source: Bank of Jamaica

**Graph 1
Historical Trend in Remittance Inflows
Dec 2002-2010**



Source: Bank of Jamaica

December 2010

For December 2010, net remittances were **US\$174.7 million**, which represented an improvement of **US\$18.0 million** or **11.5 per cent** relative to the corresponding period of 2009. (Table 1) This resulted from an increase in gross inflows and a decline in remittance outflows.

During the month, total remittance inflows were **US\$197.6 million**, an improvement of **US\$16.7 million** or **9.2 per cent**. The increase in total remittance inflows emanated from increases in both the *Remittance Companies* and *Other Remittances* sub-categories of **US\$6.9 million** and **US\$9.8 million** respectively. (Table 1) For the review month, a decline in outflows of **US\$1.3 million** further contributed to the positive growth in net remittances.

For the month, remittance inflows of **US\$197.6 million** represented one of the highest inflows seen for the month of December in recent history. (Graph 1) This improvement resulted primarily from increased inflows through Remittance Companies.

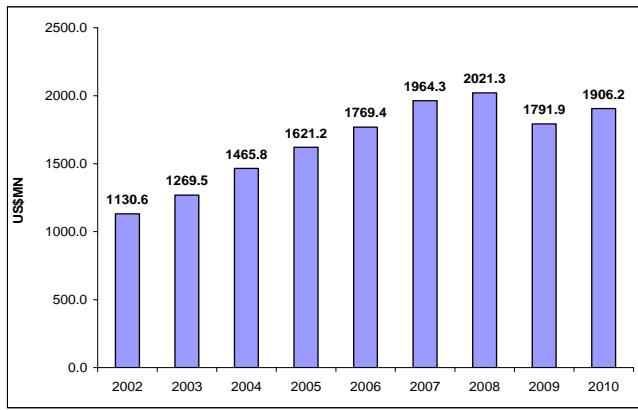
Table 2

JAMAICA'S REMITTANCES (US\$MN)				
	Jan-Dec			
	2009	2010*	Change	% Change**
Total Remittance Inflows	1790.3	1906.2	115.9	6.5
Remittance Companies^	1525.8	1613.9	88.1	5.8
Other Remittances	264.5	292.3	27.7	10.5
Total Remittance Outflows	237.4	248.1	10.7	4.5
Net Remittances	1552.9	1658.1	105.2	6.8

* Provisional
** Growth relative to the corresponding period of the previous year
^ Flows through Remittance Companies

Source: Bank of Jamaica

Graph 2
Historical Trend in Remittance Inflows
Jan - Dec 2002-2010



Source: Bank of Jamaica

January to December 2010

For 2010, net remittances were **US\$1,658.1 million**, which represented an increase of **US\$105.2 million** or **6.8 per cent** relative to 2009. (Table 2)

For the calendar year, total remittance inflows were **US\$1,906.2 million**, representing an increase of **US\$115.9 million** or **6.5 per cent**. This increase in total remittance inflows emanated mainly from improvements in inflows to both the **Remittance Companies**, and the **Other Remittances** sub-categories. **Remittance Companies** recorded an increase of **US\$88.1 million** or **5.8 per cent**, while **Other Remittances** had an increase of **US\$27.7 million** or **10.5 per cent** compared to 2009.

Although marginally better than 2009, remittance inflows of **US\$1,906.2 million** were still below the pre-crisis (2008) trend. (Graph 2) A continued improvement in remittance inflows in ensuing months is juxtaposed on the improving macroeconomic conditions in source economies.

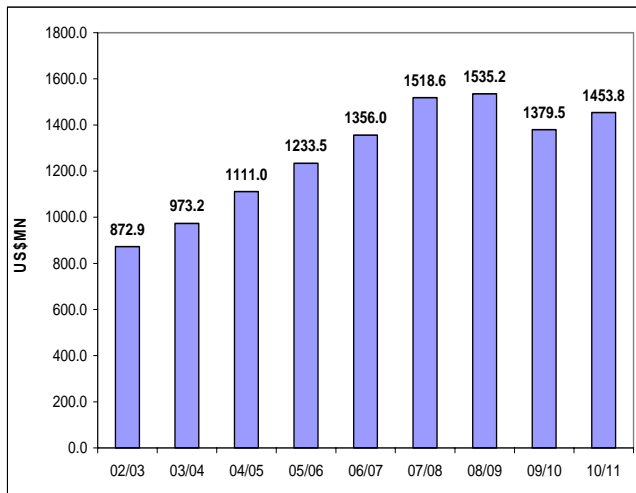
Table 3

JAMAICA'S REMITTANCES (US\$MN)				
	April-Dec			
	2009/10	2010/11	Change	% Change**
Total Remittance Inflows	1377.9	1453.8	75.9	5.5
Remittance Companies^	1177.0	1227.7	50.8	4.3
Other Remittances	200.9	226.1	25.1	12.5
Total Remittance Outflows	181.5	197.0	15.5	8.5
Net Remittances	1196.4	1256.9	60.4	5.0

* Provisional
** Growth relative to the corresponding period of the previous year
^ Flows through Remittance Companies

Source: Bank of Jamaica

Graph 3
Historical Trend Remittance Inflows
Apr-Dec 2002-2010



Source: Bank of Jamaica

April to December 2010/11

For the first nine months of the 2010/11 fiscal year (FY), net remittances were **US\$1,256.9 million**, which represented an increase of **US\$60.4 million** or **5.0 per cent** relative to the corresponding period of the previous fiscal year.

For the FY-to-December, total remittance inflows were **US\$1,453.8 million**, representing an increase of **US\$75.9 million** or **5.5 per cent** over the corresponding period of the preceding fiscal year. The increase in total remittance inflows emanated from both *Remittance Companies* and the *Other Remittances* sub-categories. *Remittance Companies* recorded an increase of **US\$50.8 million** or **4.3 per cent**, while *Other Remittances* had an increase of **US\$25.1 million** or **12.5 per cent**.

The remittance inflows of **US\$1,453.8 million** for the first nine months of the 2010/11 fiscal year represents a reversal of the decline noted in the corresponding period in fiscal year 2009/10 (Graph 3). This was consistent with the global developments occurring during the review period.

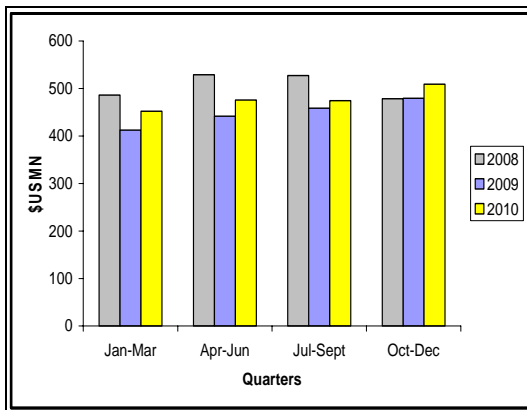
Table 4

JAMAICA'S REMITTANCES (US\$MN)				
	Oct-Dec	Oct-Dec		%
	2009	2010	Change	Change**
Total Remittance Inflows	477.9	503.5	25.6	5.4
Remittance Companies [^]	409.6	424.3	14.7	3.6
Other Remittances	68.3	79.2	10.9	16.0
Total Remittance Outflows	64.8	64.2	-0.6	-0.9
Net Remittances	413.1	439.3	26.2	6.3

* Provisional
** Growth relative to the corresponding period of the previous year
[^] Flows through Remittance Companies

Source: Bank of Jamaica

Graph 4
Quarterly Remittance Inflows
2008-2010



Source: Bank of Jamaica

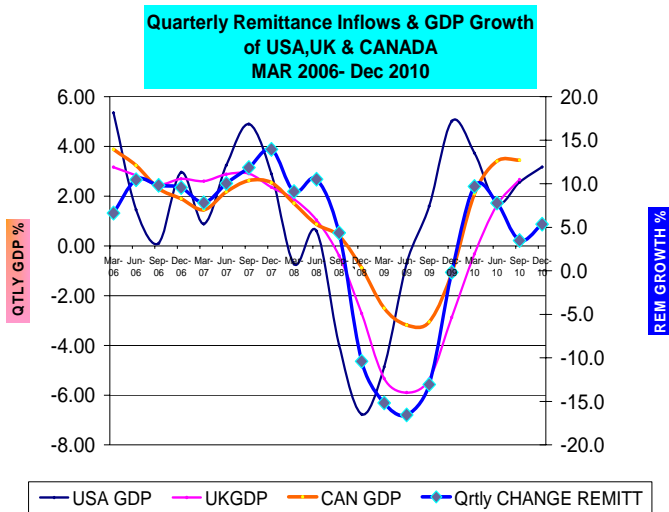
October to December 2010

For the fourth quarter of 2010 (2010:Q4), net remittances were **US\$439.3 million**, which represented an increase of **US\$26.2 million** or **6.3 per cent** relative to the corresponding quarter of the previous year.

For 2010:Q4, total remittance inflows were **US\$503.5 million**, representing an increase of **US\$25.6 million** or **5.4 per cent** over the corresponding quarter of the previous year. The increase in total remittance inflows emanated from both *Remittance Companies* and the *Other Remittances* sub-categories. *Remittance Companies* recorded an increase of **US\$14.7 million** or **3.6 per cent**, while *Other Remittances* had an increase of **US\$10.9 million** or **16.0 per cent**.

For 2010:Q4, remittance inflows of **US\$503.5 million** represented an increase relative to 2009 and 2008, respectively (Graph 4). This improvement resulted primarily from relatively strong inflows in all three months of the review quarter.

Graph 5
Quarterly Remittance Inflows
& GDP Growth of US, UK and CANADA
Mar 2006- Dec 2010



Remittance inflows have exhibited a positive relationship with the rate of economic recovery in major source countries (Graph 5). As these economies recover, remittance flows are expected to improve over ensuing quarters.

Table 5

Jamaica's Remittances				
US\$ Millions				
	2009	2010*	Change	% Change**
	Dec	Dec		
Remittance Companies[^]	155.4	162.3	6.9	4.4
Other Remittances	25.5	35.3	9.8	38.4
Total Remittance Inflows	180.9	197.6	16.7	9.2
Total Remittance Outflows	24.2	22.9	-1.3	-5.5
Net Remittances	156.7	174.7	18.0	11.5
* Provisional				
** Growth relative to the corresponding period of the previous year.				
[^] Flows through Remittance Companies				
 <i>External Sector Statistics Unit Economic Information & Publications Dept. Research & Economic Programming Division Bank of Jamaica</i>				

Table 6

Jamaica's Remittances				
US\$ Millions				
	<i>2009</i>	<i>2010*</i>	<i>Change</i>	<i>% Change**</i>
	<i>Jan-Dec</i>	<i>Jan-Dec</i>		
Remittance Companies [^]	1525.8	1613.9	88.1	5.8
Other Remittances	264.5	292.3	27.7	10.5
Total Remittance Inflows	1790.3	1906.2	115.9	6.5
Total Remittance Outflows	237.4	248.1	10.7	4.5
Net Remittances	1552.9	1658.1	105.2	6.8
* <i>Provisional</i>				
** <i>Growth relative to the corresponding period of the previous year.</i>				
[^] <i>Flows through Remittance Companies</i>				
<i>External Sector Statistics Unit</i>				
<i>Economic Information & Publications Dept.</i>				
<i>Research & Economic Programming Division</i>				
<i>Bank of Jamaica</i>				

Table 7

Jamaica's Remittances				
US\$ Millions				
	<i>'2009/10</i>	<i>'2010/11*</i>	<i>Change</i>	<i>% Change**</i>
	<i>April-Dec</i>	<i>April-Dec</i>		
Remittance Companies^	1177.0	1227.7	50.8	4.3
Other Remittances	200.9	226.1	25.1	12.5
Total Remittance Inflows	1377.9	1453.8	75.9	5.5
Total Remittance Outflows	181.5	197.0	15.5	8.5
Net Remittances	1196.4	1256.9	60.4	5.0
<i>* Provisional</i>				
<i>** Growth relative to the corresponding period of the previous year.</i>				
<i>^ Flows through Remittance Companies</i>				
 <i>External Sector Statistics Unit</i> <i>Economic Information & Publications Dept.</i> <i>Research & Economic Programming Division</i> <i>Bank of Jamaica</i>				

Table 8

Jamaica's Remittances						
US\$ Millions						
	2008	2009	2010*		% Change**	
	Oct-Dec	Oct-Dec	Oct-Dec	Change	Oct-Dec -09*	Oct-Dec -10*
Remittance Companies^	381.0	409.6	424.3	14.7	7.5	3.6
Other Remittances	97.7	68.3	79.2	10.9	-30.1	16.0
Total Remittance Inflows	478.7	477.9	503.5	25.6	-0.2	5.4
Total Remittance Outflows	72.1	64.8	64.2	-0.6	-10.2	-0.9
Net Remittances	406.6	413.1	439.3	26.2	1.6	6.3
<i>* Provisional</i>						
<i>** Growth relative to the corresponding period of the previous year.</i>						
<i>^ Flows through Remittance Companies</i>						
<i>External Sector Statistics Unit</i>						
<i>Economic Information & Publications Dept.</i>						
<i>Research & Economic Programming Division</i>						
<i>Bank of Jamaica</i>						

Table 9

Jamaica's Historical Remittances												
<i>US\$ Millions</i>												
	<i>Jan</i>	<i>Feb</i>	<i>Mar</i>	<i>Apr</i>	<i>May</i>	<i>Jun</i>	<i>Jul</i>	<i>Aug</i>	<i>Sept</i>	<i>Oct</i>	<i>Nov</i>	<i>Dec</i>
Remittance Companies												
2008	111.0	122.1	131.7	128.6	138.3	128.7	133.3	124.7	137.6	126.7	110.7	143.5
2009	109.0	113.3	126.5	123.6	129.1	127.9	128.9	128.2	129.6	134.9	119.3	155.4
2010	116.2	122.4	147.5	136.8	132.9	132.8	134.9	133.6	132.4	134.7	127.3	162.3
<i>month/month growth rate (%):2010/2009</i>	6.7	8.0	16.6	10.7	2.9	3.8	4.6	4.2	2.2	-0.1	6.7	4.4
<i>CYTD growth rate (%):2010/2009</i>	6.7	7.4	10.7	10.7	9.0	8.1	7.6	7.2	6.6	5.9	5.9	5.8
Other Remittances												
2008	38.5	40.2	42.6	48.8	42.2	42.5	43.8	41.3	46.8	39.3	24.9	33.5
2009	25.1	19.0	19.4	18.1	17.0	25.9	25.0	23.9	22.8	19.4	23.4	25.5
2010	19.9	19.7	26.6	25.3	23.2	24.9	24.6	23.1	25.7	21.1	22.8	35.3
<i>month/month growth rate (%):2010/2009</i>	-20.6	3.4	36.9	39.9	36.4	-3.7	-1.6	-3.1	12.6	8.5	-2.2	38.4
<i>CYTD growth rate (%):2010/2009</i>	-20.6	-10.3	4.1	12.0	16.2	12.1	9.8	8.0	8.6	8.6	7.5	10.5
Total Remittance Inflows												
2008	149.6	162.3	174.3	177.4	180.5	171.2	177.0	165.9	184.3	166.0	135.7	177.0
2009	134.1	132.3	145.9	141.7	146.0	153.8	153.9	152.1	152.4	154.3	142.7	180.9
2010	136.2	142.1	174.1	162.2	156.0	157.7	159.5	156.8	158.2	155.8	150.1	197.6
<i>month/month growth rate (%)</i>	1.5	7.4	19.3	14.5	6.8	2.5	3.6	3.1	3.8	1.0	5.2	9.2
<i>CYTD growth rate (%)</i>	1.5	4.4	9.7	10.9	10.1	8.7	7.9	7.3	6.9	6.3	6.2	6.5
Total Remittance Outflows												
2008	27.3	26.6	26.8	26.0	25.7	26.2	27.8	29.9	24.8	24.0	22.3	25.8
2009	20.9	15.4	19.6	15.0	15.8	20.3	28.4	17.9	19.4	19.7	20.9	24.2
2010	15.1	15.0	21.1	21.0	22.0	21.7	24.9	22.9	20.2	20.7	20.6	22.9
<i>month/month growth rate (%)</i>	-27.9	-2.6	7.2	40.6	39.4	6.9	-12.3	28.5	4.0	5.2	-1.4	-5.5
<i>CYTD growth rate (%)</i>	-27.9	-17.1	-8.6	1.8	8.7	8.3	4.0	6.8	6.5	6.4	5.6	4.5
Net Remittances												
2008	122.2	135.7	147.5	151.4	154.8	145.0	149.2	136.1	159.5	142.0	113.4	151.3
2009	113.2	116.9	126.3	126.7	130.2	133.5	125.5	134.3	133.0	134.7	121.8	156.7
2010	121.1	127.1	153.0	141.1	134.0	136.0	134.6	133.8	138.0	135.1	129.5	174.7
<i>month/month growth rate (%)</i>	7.0	8.7	21.2	11.4	2.9	1.9	7.2	-0.3	3.7	0.3	6.3	11.5
<i>CYTD growth rate (%)</i>	7.0	7.8	12.6	12.2	10.3	8.8	8.5	7.4	6.9	6.2	6.2	6.8
* Provisional												
.. Not available												
<i>External Sector Statistics Unit</i>												
<i>Economic Information & Publications Dept.</i>												
<i>Research & Economic Programming Division</i>												
<i>Bank of Jamaica</i>												

Table 10

Jamaica's Historical Remittances (by quarter)				
<i>US\$ Millions</i>				
	<i>Jan-Mar</i>	<i>Apr-Jun</i>	<i>Jul-Sept</i>	<i>Oct-Dec</i>
Remittance Companies				
2008	364.9	395.6	395.5	381.0
2009	348.8	380.6	386.8	409.6
2010	386.1	402.5	401.0	424.3
quarter/quarter growth rate (%):2009/2008	-4.4	-3.8	-2.2	7.5
quarter/quarter growth rate (%):2010/2009	10.7	5.8	3.7	3.6
Other Remittances				
2008	121.3	133.5	131.8	97.7
2009	63.6	61.0	71.7	68.3
2010	66.2	73.4	73.5	79.2
quarter/quarter growth rate (%):2009/2008	-47.6	-54.3	-45.6	-30.1
quarter/quarter growth rate (%):2010/2009	4.1	20.4	2.4	16.0
Total Remittance Inflows				
2008	486.2	529.1	527.3	478.7
2009	412.4	441.6	458.5	477.9
2010	452.4	475.9	474.4	503.5
quarter/quarter growth rate (%):2009/2008	-15.2	-16.6	-13.1	-0.2
quarter/quarter growth rate (%):2010/2009	9.7	7.8	3.5	5.4
Total Remittance Outflows				
2008	80.7	77.9	82.5	72.1
2009	55.9	51.1	65.6	64.8
2010	51.2	64.8	68.0	64.2
quarter/quarter growth rate (%):2009/2008	-30.7	-34.4	-20.4	-10.2
quarter/quarter growth rate (%):2010/2009	-8.6	26.8	3.6	-0.9
Net Remittances				
2008	405.4	451.3	444.9	406.6
2009	356.4	390.5	392.8	413.1
2010	401.2	411.1	406.4	439.3
quarter/quarter growth rate (%):2009/2008	-12.1	-13.5	-11.7	1.6
quarter/quarter growth rate (%):2010/2009	12.6	5.3	3.5	6.3
* Provisional				
.. Not available				
External Sector Statistics Unit				
Economic Information & Publications Dept.				
Research & Economic Programming Division				
Bank of Jamaica				

Table 11

<i>Jamaica's Historical Remittances (US\$MN)</i>				
	2007	2008	2009*	2010**
<i>Remittance Companies</i>	1166.7	1536.9	1525.8	1613.9
<i>Other Remittances</i>	797.6	484.4	264.5	292.3
<i>Total Remittance Inflows</i>	1964.3	2021.3	1790.3	1906.2
<i>Total Remittance Outflows</i>	303.2	313.2	237.4	248.1
<i>Net Remittances</i>	1661.1	1708.1	1554.5	1554.5
 <i>External Sector Statistics Unit Economic Information & Publications Dept. Research & Economic Programming Division Bank of Jamaica * Revised ** Provisional</i>				

Table 12

SELECTED INDICATORS				
	2006	2007	2008**	2009*
Selected indicators (US\$mn)				
REMITTANCE INFLOWS	1769.4	1964.3	2021.3	1790.3
TOURISM EXPENDITURE	1870.1	1910.0	1975.8	1925.5
EXPORTS	2133.6	2362.6	2743.9	1387.7
FDI (Inflows)	882.2	866.5	1436.6	540.9
IMPORTS	5077.0	6203.9	7546.8	4475.6
GDP	11893.9	12850.1	13844.7	12247.2
Remittance/Population (US\$) (Per Capita)	663.3	733.7	751.8	663.8
Remittances/GDP	14.9	15.3	14.6	14.6
Remittances/Tourist Expenditure	94.6	102.8	102.3	93.0
Remittances /Exports	82.9	83.1	73.7	129.0
Remittances/FDI (INFLOWS)	200.6	226.7	140.7	331.0
Remittances/Imports	34.9	31.7	26.8	40.0
<i>External Sector Statistics Unit Economic Information & Publications Department Research & Economic Programming Division Bank of Jamaica</i>				
** Provisional * Revised				

Table 13

Remittances for Selected Countries*												
<i>US\$ Millions</i>												
	<i>Jan</i>	<i>Feb</i>	<i>Mar</i>	<i>Apr</i>	<i>May</i>	<i>Jun</i>	<i>Jul</i>	<i>Aug</i>	<i>Sept.</i>	<i>Oct</i>	<i>Nov</i>	<i>Dec</i>
Mexico												
2008	1781.1	1859.4	2115.9	2188.4	2371.2	2264.1	2186.7	2097.5	2113.4	2636.6	1747.3	1,775.8
2009	1568.2	1803.4	2104.4	1779.8	1900.1	1922.8	1833.4	1780.4	1742.1	1691.20	1495.10	1564.2
2010	1324.3	1553.7	1955.3	1789.4	2144.7	1890.9	1871.5	1954.6	1719.3	1731.7	1629.2	1706.6
month/month growth rate (%):2010/2009	-15.6	-13.8	-7.1	0.5	12.9	-1.7	2.1	9.8	-1.3	2.4	9.0	9.1
CYTD growth rate (%):2010/2009	-15.6	-14.6	-11.7	-8.7	-4.2	-3.8	-3.0	-1.4	-1.4	-1.1	-0.3	0.4
El Salvador												
2008	275.5	298.3	338.4	338.5	353.4	334.4	332.1	305.7	304.7	304.3	264.8	337.5
2009	252.4	275.1	315.8	292.5	308.2	295.7	286.1	287.4	270.9	281.7	262.7	336.5
2010	236.0	269.2	343.2	306.5	327.1	300.9	292.8	299.0	270.7	280.9	273.2	340.0
month/month growth rate (%):2010/2009	-6.5	-2.1	8.7	4.8	6.1	1.8	2.3	4.0	-0.1	-0.3	4.0	1.0
CYTD growth rate (%):2010/2009	-6.5	-4.2	0.6	1.7	2.6	2.5	2.5	2.7	2.4	2.1	2.3	2.2
Guatemala												
2008	369.8	362.7	378.1	432.9	451.4	423.0	457.2	411.7	416.4	419.7	358.9	383.5
2009	320.5	322.5	385.2	380.1	384.9	393.2	405.7	370.8	367.4	362.80	323.70	396.6
2010	291.7	311.4	415.8	391.3	393.8	439.8	431.6	426.1	403.7	392.1	372.0	406.3
month/month growth rate (%):2010/2009	-9.0	-3.4	7.9	2.9	2.3	11.9	6.4	14.9	9.9	8.1	14.9	2.4
CYTD growth rate (%):2010/2009	-9.0	-6.2	-0.9	0.1	0.6	2.6	3.2	4.7	5.3	5.5	6.3	5.9
Jamaica**												
2008	149.6	162.3	174.3	177.4	180.5	171.2	177.0	165.9	184.3	166.0	135.7	177.0
2009	134.1	132.3	145.9	141.7	146.0	153.8	153.9	152.1	152.4	154.31	142.7	180.9
2010	136.2	142.1	174.1	162.2	156.0	157.7	159.5	156.8	158.2	155.8	150.1	197.6
month/month growth rate (%):2010/2009	1.5	7.4	19.3	14.5	6.8	2.5	3.6	3.1	3.8	1.0	5.2	9.2
CYTD growth rate (%):2010/2009	1.5	4.4	9.7	10.9	10.1	8.7	7.9	7.3	6.9	6.3	6.2	6.5
Dominican Republic												
2008	250.6	270.3	287.8	265.1	266.1	263.1	307.6	271.6	246.8	258.0	232.5	302.0
2009	229.2	241.4	271.7	241.2	265.0	248.4	279.9	263.0	248.1	247.8	226.7	279.1
2010	238.3	248.2	256.5	234.8	243.0	229.8	257.6	238.1	231.6			
month/month growth rate (%):2010/2009	4.0	2.8	-5.6	-2.7	-8.3	-7.5	-8.0	-9.5	-6.7			
CYTD growth rate (%):2010/2009	4.0	3.4	0.1	-0.6	-2.2	-3.1	-3.9	-4.6	-4.8			
* Provisional												
** Total Remittance Inflows												
.- data not available												
.. revised												
Sources : Central Banks of each country . Please note that the information above reflects the most accurate data to date,as such, these figures are subject to revision.												
<i>External Sector Statistics Unit</i>												
<i>Economic Information & Publications Dept.</i>												
<i>Research & Economic Programming Division</i>												
<i>Bank of Jamaica</i>												

Table 14

Remittance by Source Countries (US\$MN)^*													
	Jan-10	Feb-10	Mar-10	Apr-10	May-10	Jun-10	Jul-10	Aug-10	Sep-10	Oct-10	Nov-10	Dec-10	Total
USA	79.0	86.1	106.0	95.9	93.1	91.9	91.2	89.4	90.6	91.1	86.2	109.2	1109.8
<i>of which Remittance Companies</i>	<i>67.4</i>	<i>74.2</i>	<i>89.8</i>	<i>81.0</i>	<i>79.3</i>	<i>77.3</i>	<i>77.1</i>	<i>76.2</i>	<i>75.9</i>	<i>78.8</i>	<i>73.1</i>	<i>89.7</i>	<i>939.8</i>
UK	24.7	23.5	27.5	26.9	24.2	26.3	27.1	28.1	29.4	27.2	27.9	38.9	331.9
<i>of which Remittance Companies</i>	<i>21.1</i>	<i>20.3</i>	<i>23.3</i>	<i>22.7</i>	<i>20.6</i>	<i>22.1</i>	<i>22.9</i>	<i>23.9</i>	<i>24.6</i>	<i>23.5</i>	<i>23.7</i>	<i>32.0</i>	<i>280.9</i>
CAN	12.1	11.8	15.6	16.1	16.2	16.9	18.7	17.5	17.2	17.1	14.7	19.9	193.8
<i>of which Remittance Companies</i>	<i>10.4</i>	<i>10.1</i>	<i>13.2</i>	<i>13.6</i>	<i>13.8</i>	<i>14.3</i>	<i>15.8</i>	<i>14.9</i>	<i>14.4</i>	<i>14.8</i>	<i>12.5</i>	<i>16.4</i>	<i>164.0</i>
Other Markets	20.3	20.6	25.0	23.2	22.5	22.6	22.6	21.7	20.9	20.4	21.3	29.6	270.7
<i>of which Remittance Companies</i>	<i>17.3</i>	<i>17.8</i>	<i>21.2</i>	<i>19.6</i>	<i>19.2</i>	<i>19.0</i>	<i>19.1</i>	<i>18.5</i>	<i>17.5</i>	<i>17.6</i>	<i>18.0</i>	<i>24.3</i>	<i>229.2</i>
TOTAL	136.2	142.1	174.1	162.2	156.0	157.7	159.5	156.8	158.2	155.8	150.1	197.6	1906.2
<i>of which Remittance Companies</i>	<i>116.2</i>	<i>122.4</i>	<i>147.5</i>	<i>136.8</i>	<i>132.9</i>	<i>132.8</i>	<i>134.9</i>	<i>133.6</i>	<i>132.4</i>	<i>134.7</i>	<i>127.3</i>	<i>162.3</i>	<i>1613.9</i>

* Provisional

Source: Bank of Jamaica

^+ Estimates are based on information submitted by Institutions

^ Revised

CHART 1
Month over month Remittances
Growth rates: 2008/09 & 2009/10

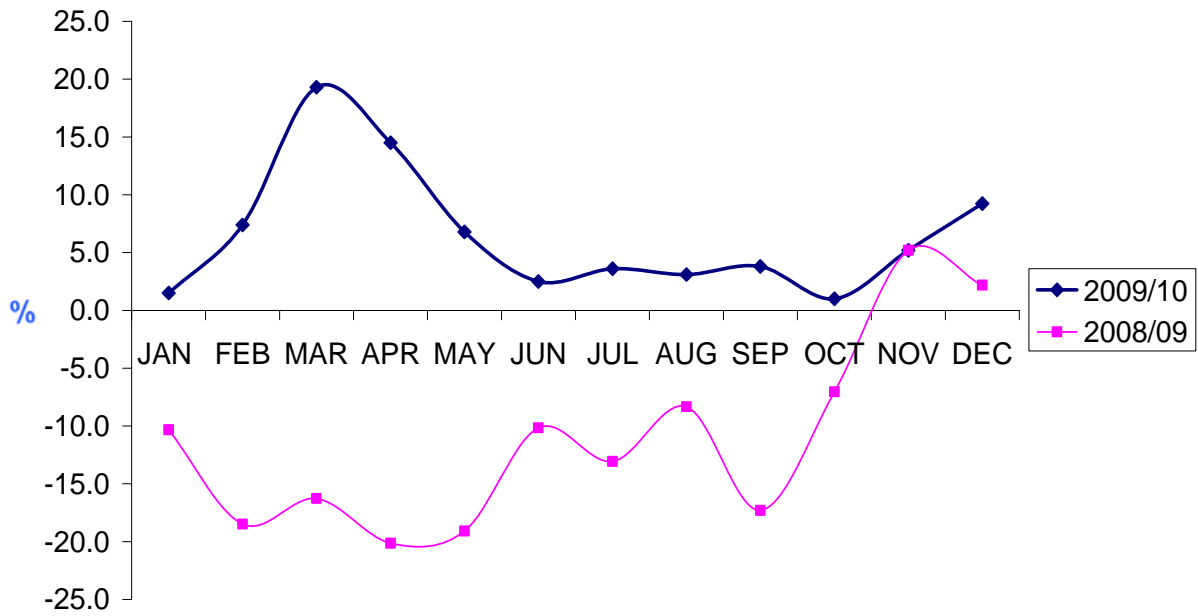


Chart 2
Percentage Contribution by Source Country
Jan 2010-Dec 2010

